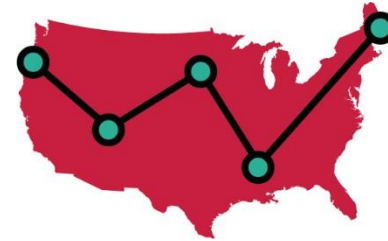
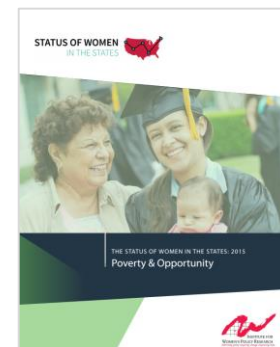
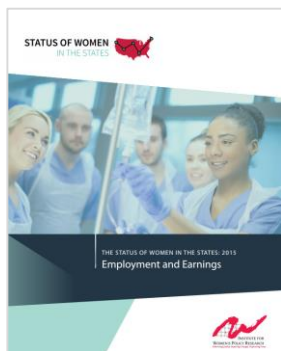


STATUS OF WOMEN IN THE STATES



KEY FINDINGS 2015

STATUS OF WOMEN IN THE STATES 2015 TOPICS



NEW RELEASES TODAY

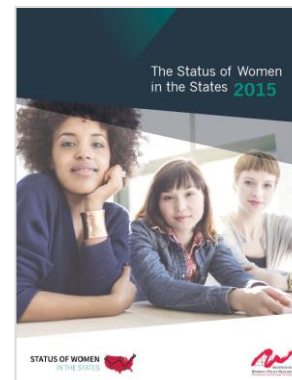
Political Participation Chapter



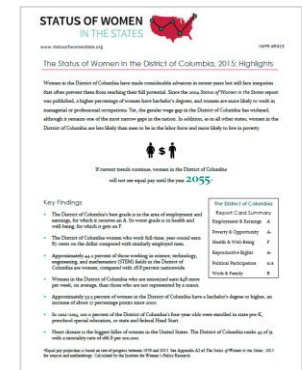
Work & Family Chapter



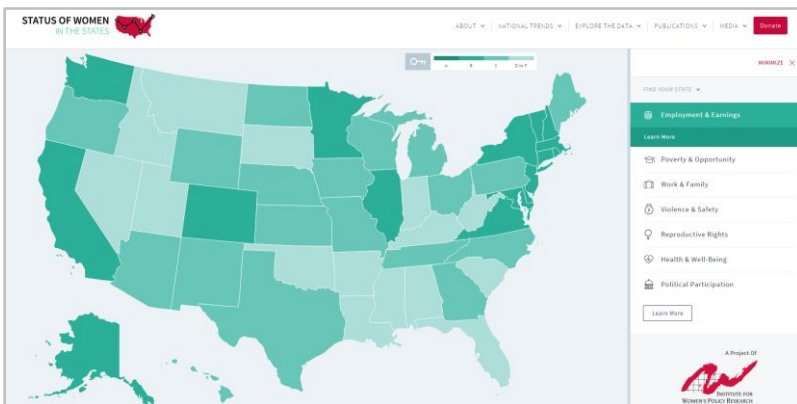
Comprehensive National Report



Fact sheets for 50 states & DC

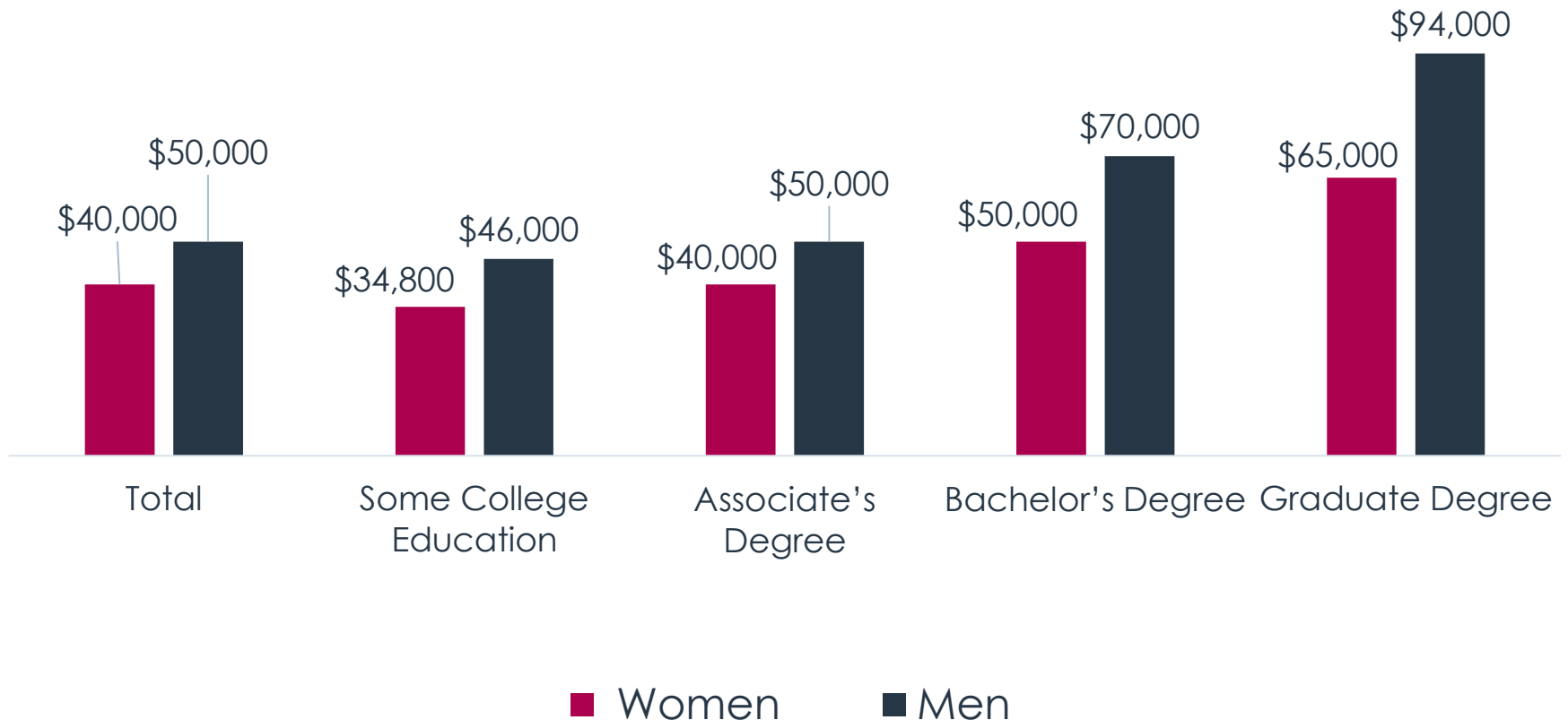


New Data on statusofwomendata.org



WOMEN WITH DEGREES EARN LESS THAN COMPARABLE MEN

Earnings by Education Level

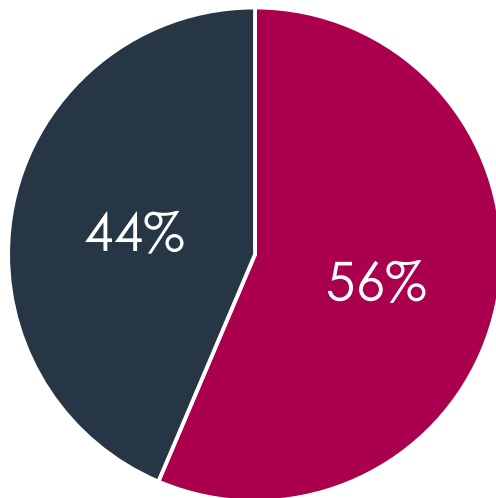


Source: IWPR analysis of American Community Survey data (Integrated Public Use Microdata Series, Version 5.0).

WOMEN CONCENTRATED IN LOWER-WAGE JOBS

For example...

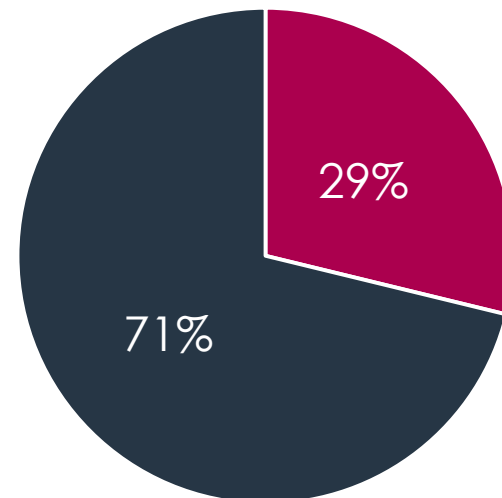
Service Occupations



■ Women ■ Men

Median annual earnings:
\$23,000

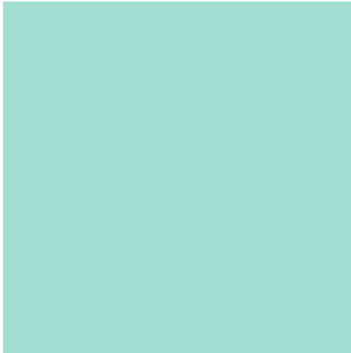
STEM Occupations



■ Women ■ Men

Median annual earnings:
\$64,000

INTERSECTION OF GENDER & RACE



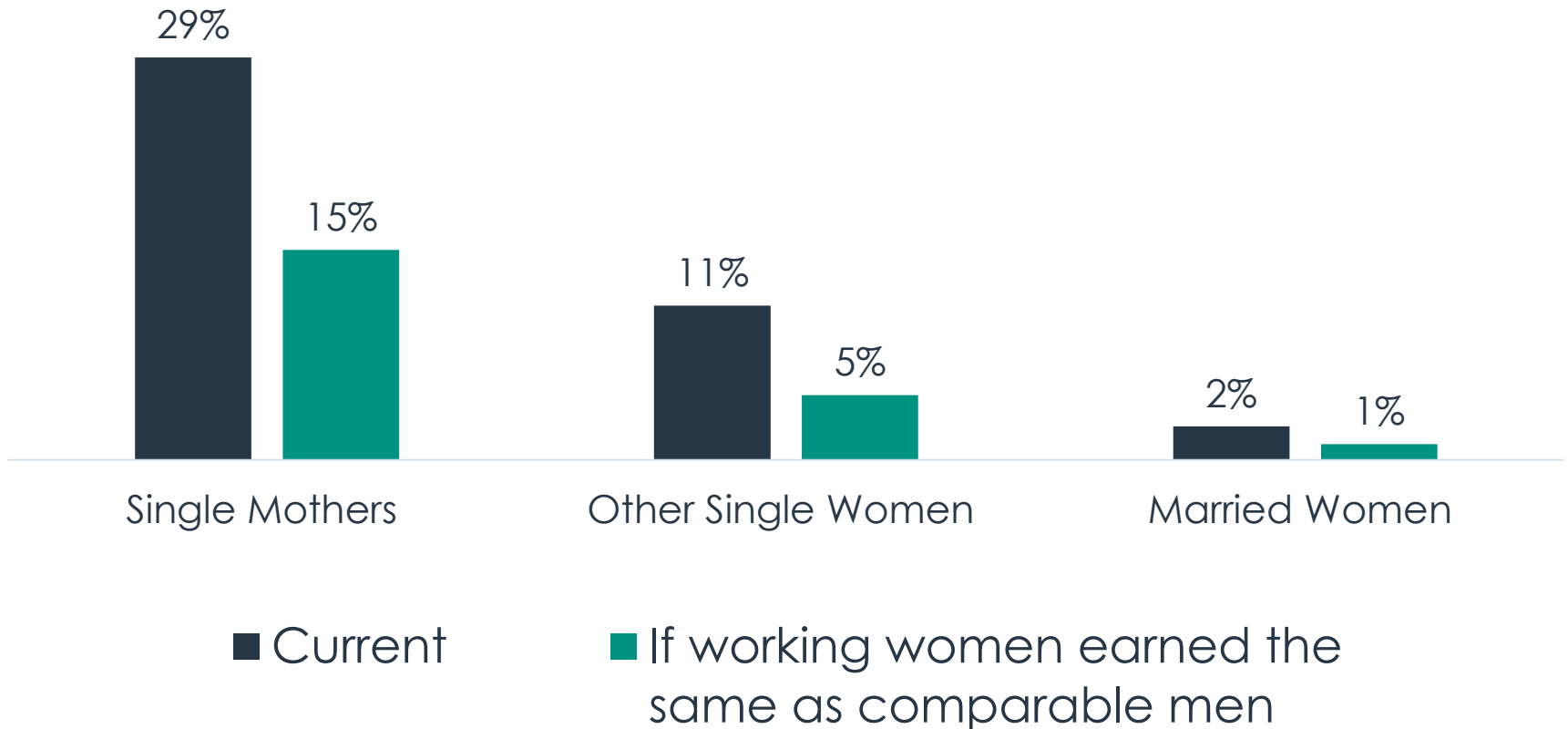
Hispanic women
earn \$20,000 less per
year than white men.



Black women earn
\$14,000 less per year
than white men.

CLOSING THE GENDER WAGE GAP WOULD CUT POVERTY IN HALF

Poverty Rate for Families with and without Equal Pay



Source: IWPR calculations based on the Current Population Survey Annual Social and Economic supplements, 2010-2012, for calendar years 2009-2011; all in 2012 dollars.

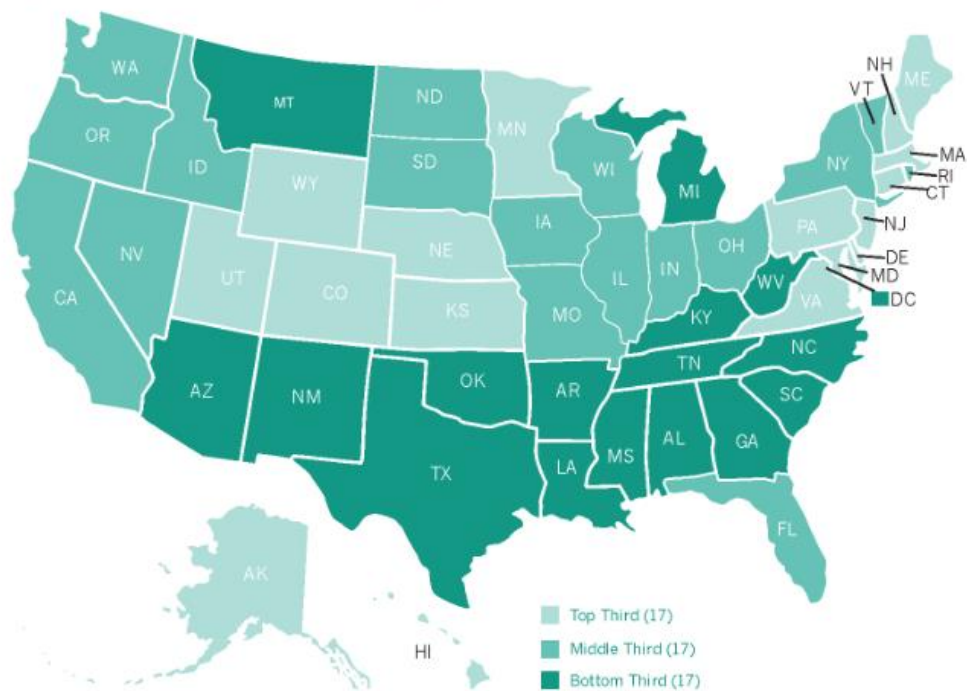


WOMEN'S POVERTY RATES ARE 30% HIGHER THAN MEN'S

Native American, Black, & Hispanic women:
≥2x the poverty rate of
White women.

More than 1 in 4 Native
American & Black
women live in poverty.

Map 4.6. Percent of Women Above Poverty, 2013



Note: For women aged 18 and older.
Source: IWPR analysis of American Community Survey microdata (IPUMS, Version 5.0).

TRENDS IN HEALTH & WELL-BEING: 2004-2015



Where women's health improved:

- Heart disease deaths
- Lung cancer deaths
- Breast cancer deaths
- AIDS incidence for women

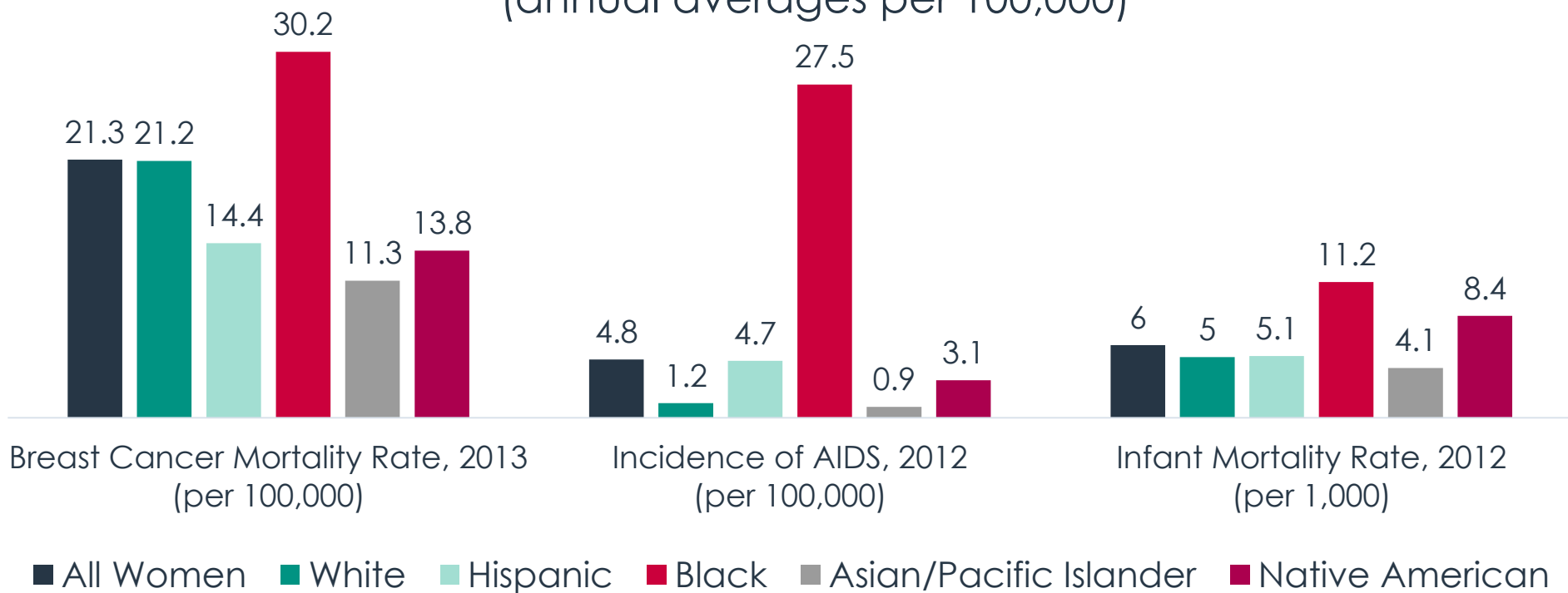


Where women's health worsened:

- Mental health
- Suicide
- Activity limitations due to health
- Diabetes
- Chlamydia

HEALTH OUTCOMES FOR BLACK WOMEN WORSE ACROSS RANGE OF MEASURES

Mortality and Incidence of Disease Among Women by Race and Ethnicity, United States
(annual averages per 100,000)



Source: IWPR compilation of data from the Centers for Disease Control and Prevention.

INTIMATE PARTNER VIOLENCE & RAPE



1 in 3 women have experienced **physical violence by an intimate partner**

1 in 7 girls have experienced **sexual dating violence**

Nearly **1 in 5 women** and **28% of Native American women** have been **raped**

U.S. WOMEN MORE LIKELY TO VOTE THAN MEN

More U.S. women vote than U.S. men.
(59% compared with 54% of men in 2012)


Black women most likely to vote (66%), but least likely to be represented in office.

SHARE OF WOMEN IN CONGRESS FAR BELOW SHARE OF WOMEN IN OVERALL POPULATION



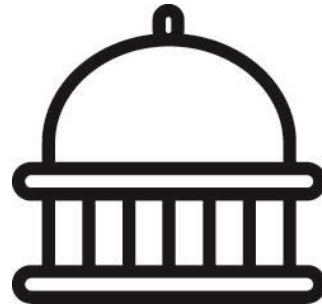
**Women hold 19% of seats
in Congress.**

18 states have
no female representatives.



Only 6% of seats in
Congress are held by
women of color.

POLITICAL PARITY PROJECTION



At the current rate of progress, women will not hold an equal share of seats with men in the U.S. Congress until

2117.

THE BEST & WORST STATES FOR WOMEN

Best States

1. Minnesota
2. Connecticut (tied)
2. Massachusetts (tied)
2. Vermont (tied)
5. California (tied)
5. Hawaii (tied)
5. Maryland (tied)

Worst States

51. Alabama (tied)
 51. Mississippi (tied)
 49. Kentucky (tied)
 49. Tennessee (tied)
 47. Florida (tied)
 47. Texas (tied)
- Dishonorable Mention: Ohio

STATUS OF WOMEN
IN THE STATES



INSTITUTE FOR WOMEN'S POLICY RESEARCH

www.iwpr.org | www.statusofwomendata.org | @IWPRResearch

